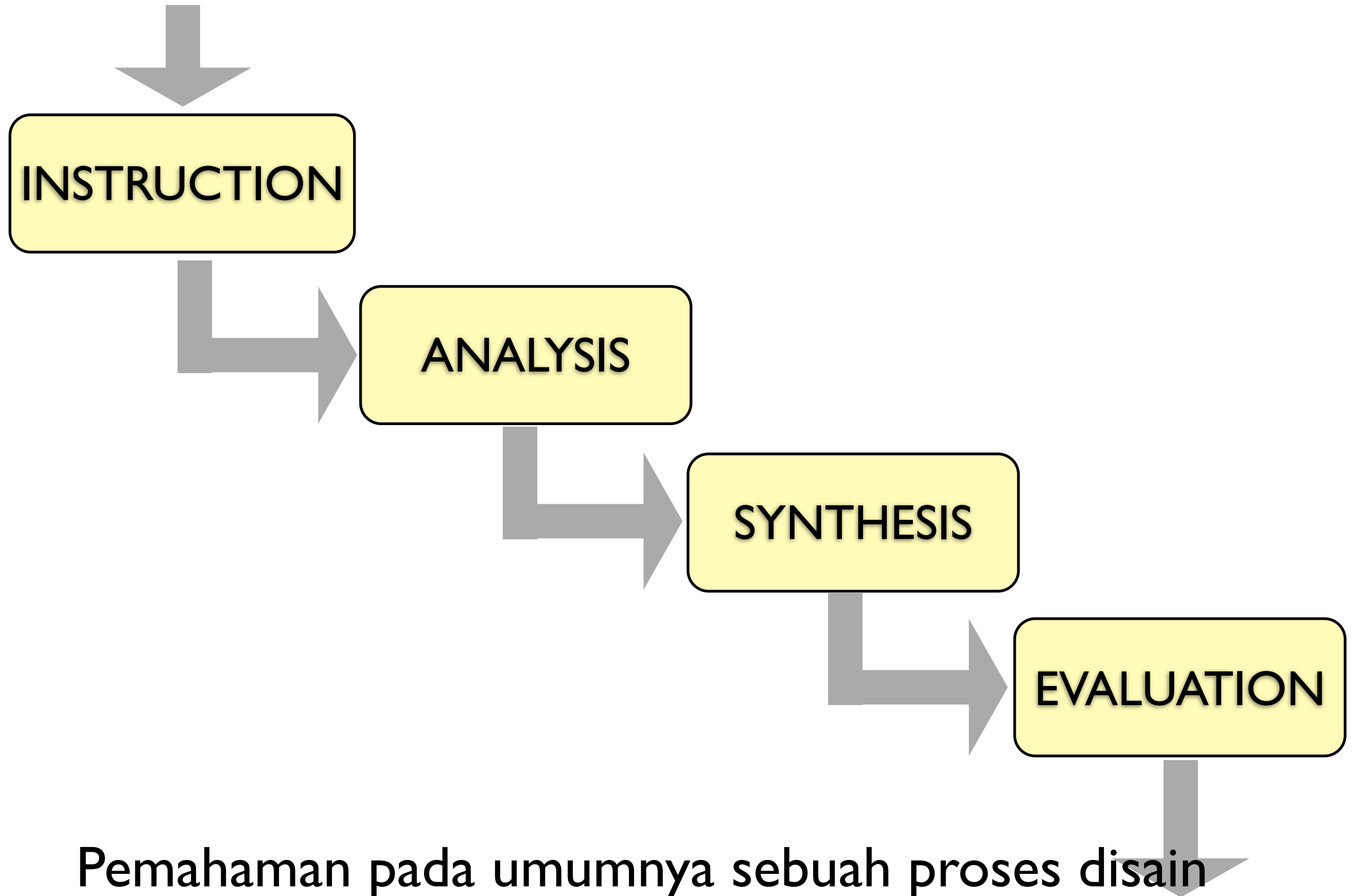
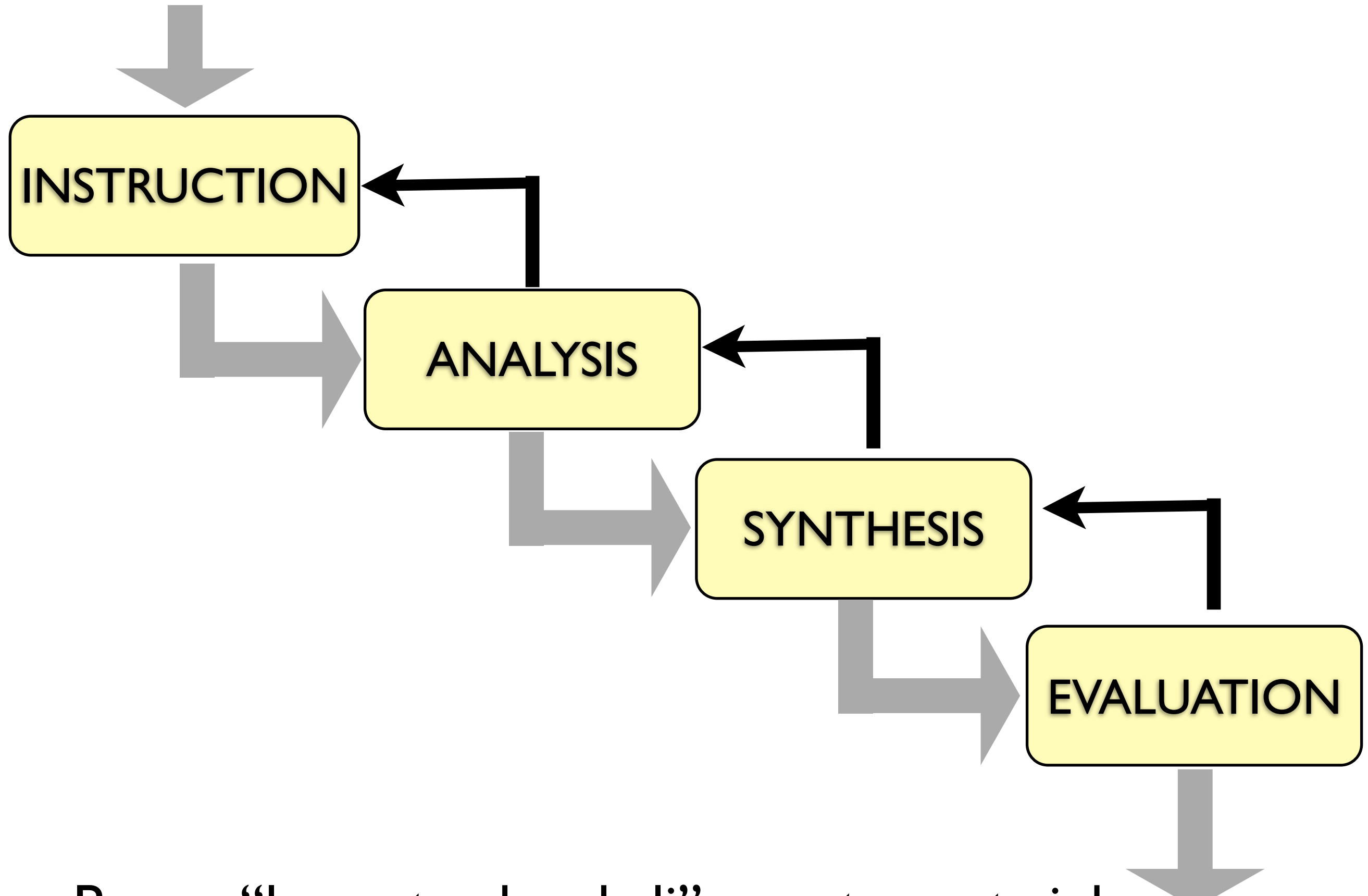


# Mempresentasikan Gagasan

# PROSES DISAIN

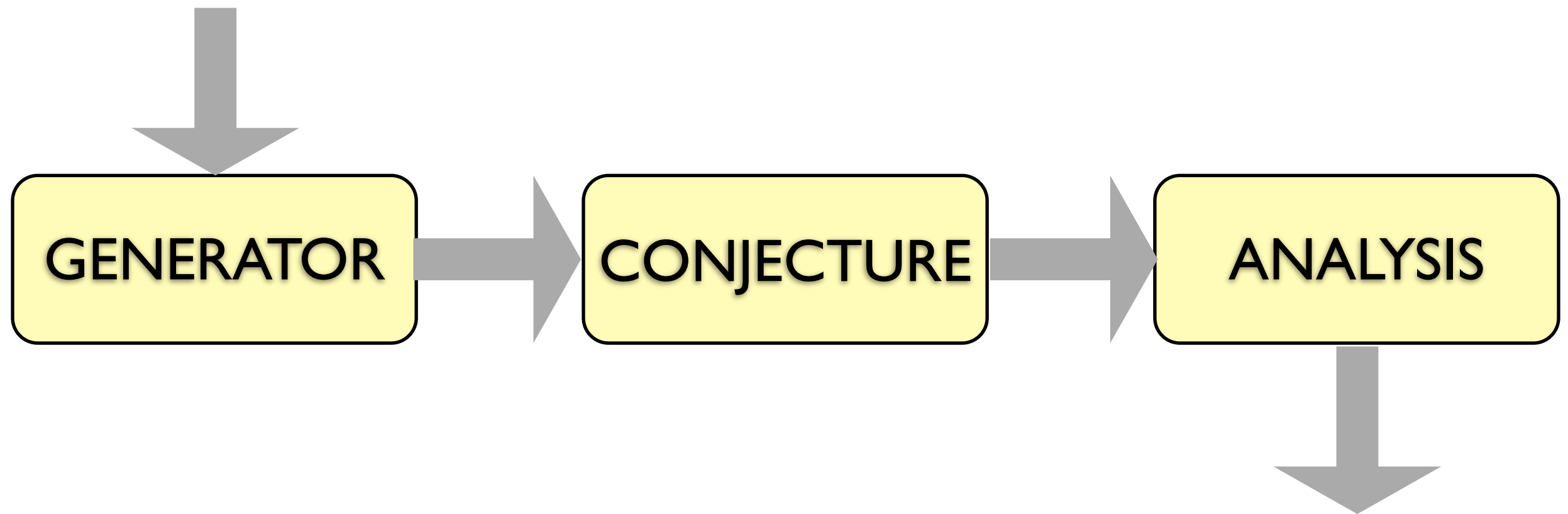


# PROSES DISAIN



Proses “lompatan kembali” yang ternyata inheren

# PROSES DISAIN

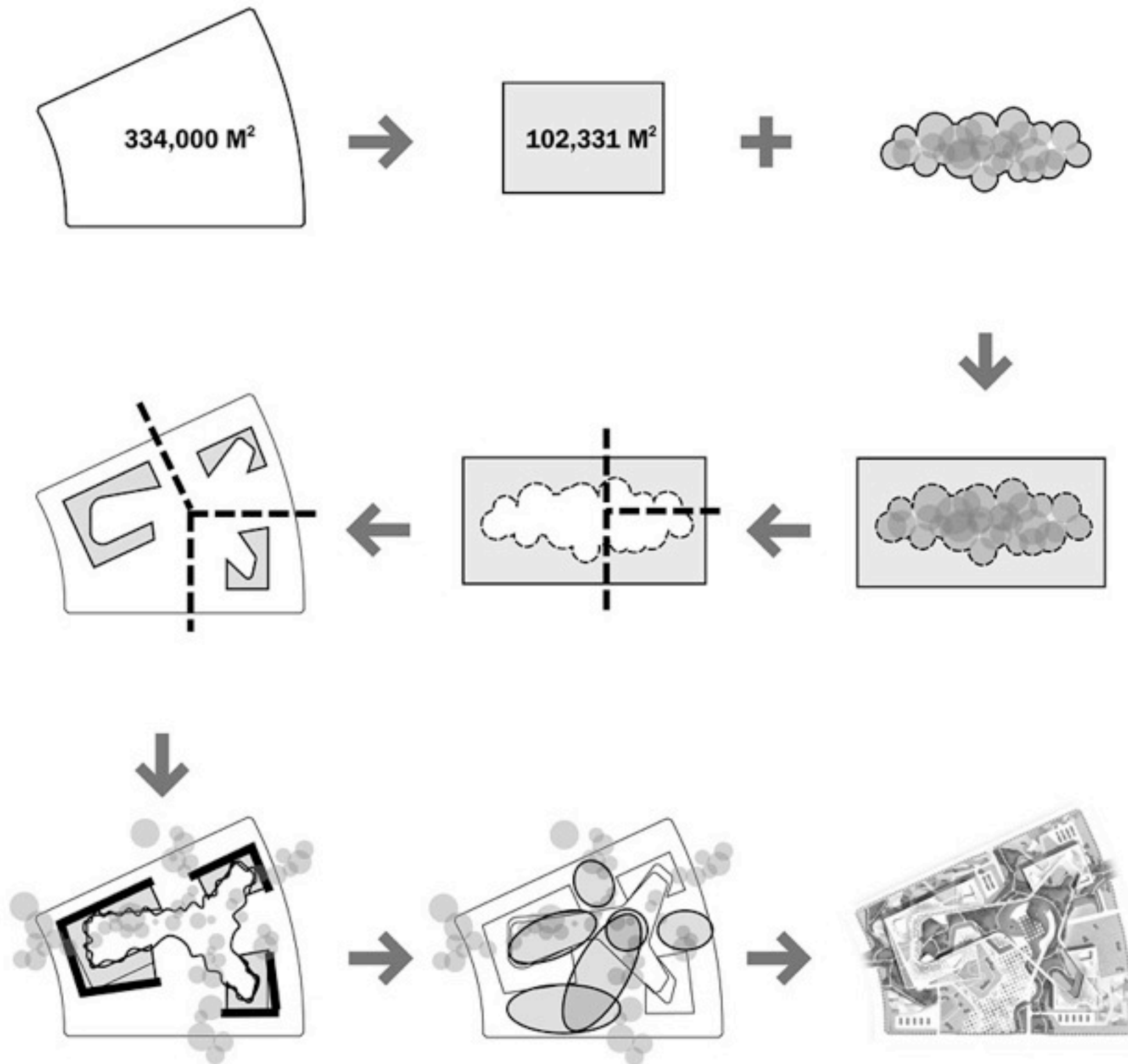


Peta versi Darke, 1978

# DESIGN PROCESS

<http://www.haeahn.co.kr/>

<http://www.h-associates.net/>



[http://www.bustler.net/index.php/article/chung-nam\\_government\\_complex/](http://www.bustler.net/index.php/article/chung-nam_government_complex/)

# DESIGN PROCESS

<http://www.haeahn.co.kr/>

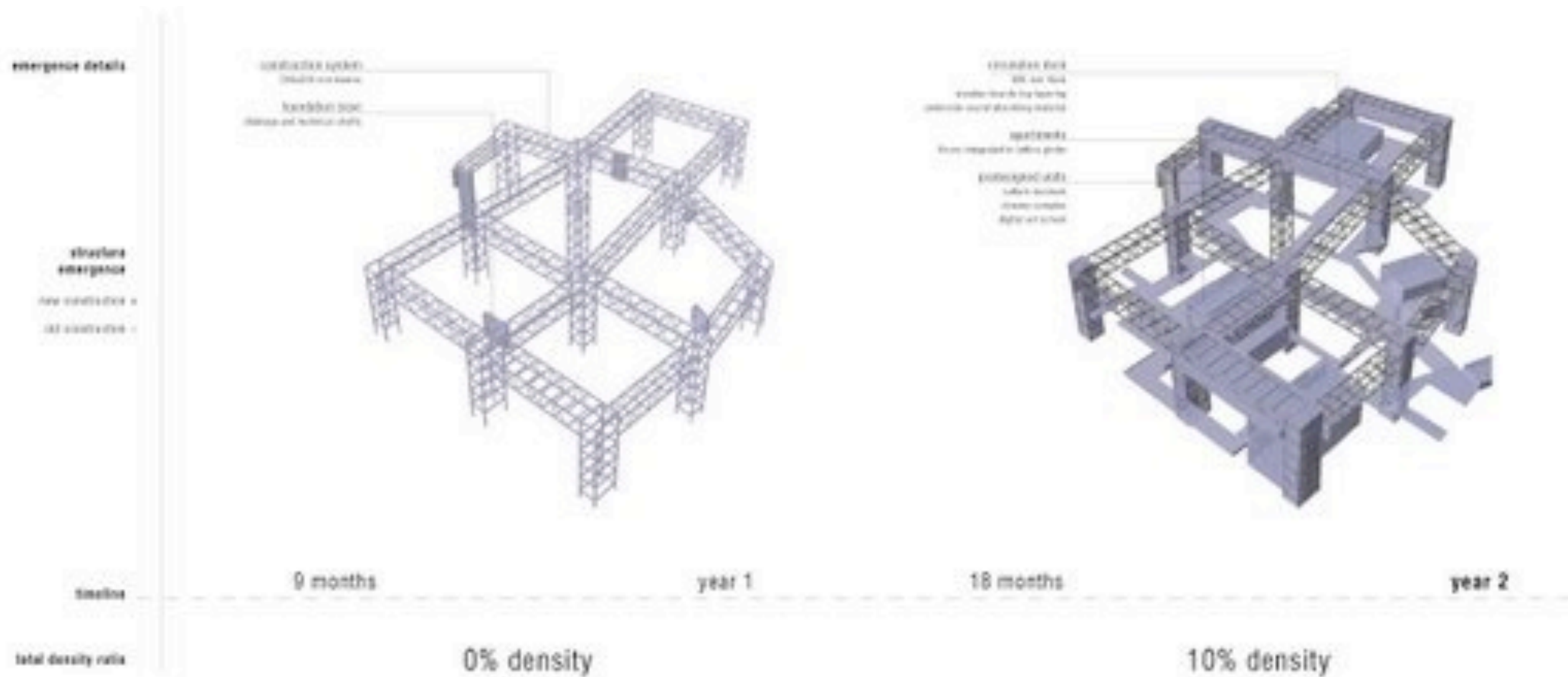
<http://www.h-associates.net/>



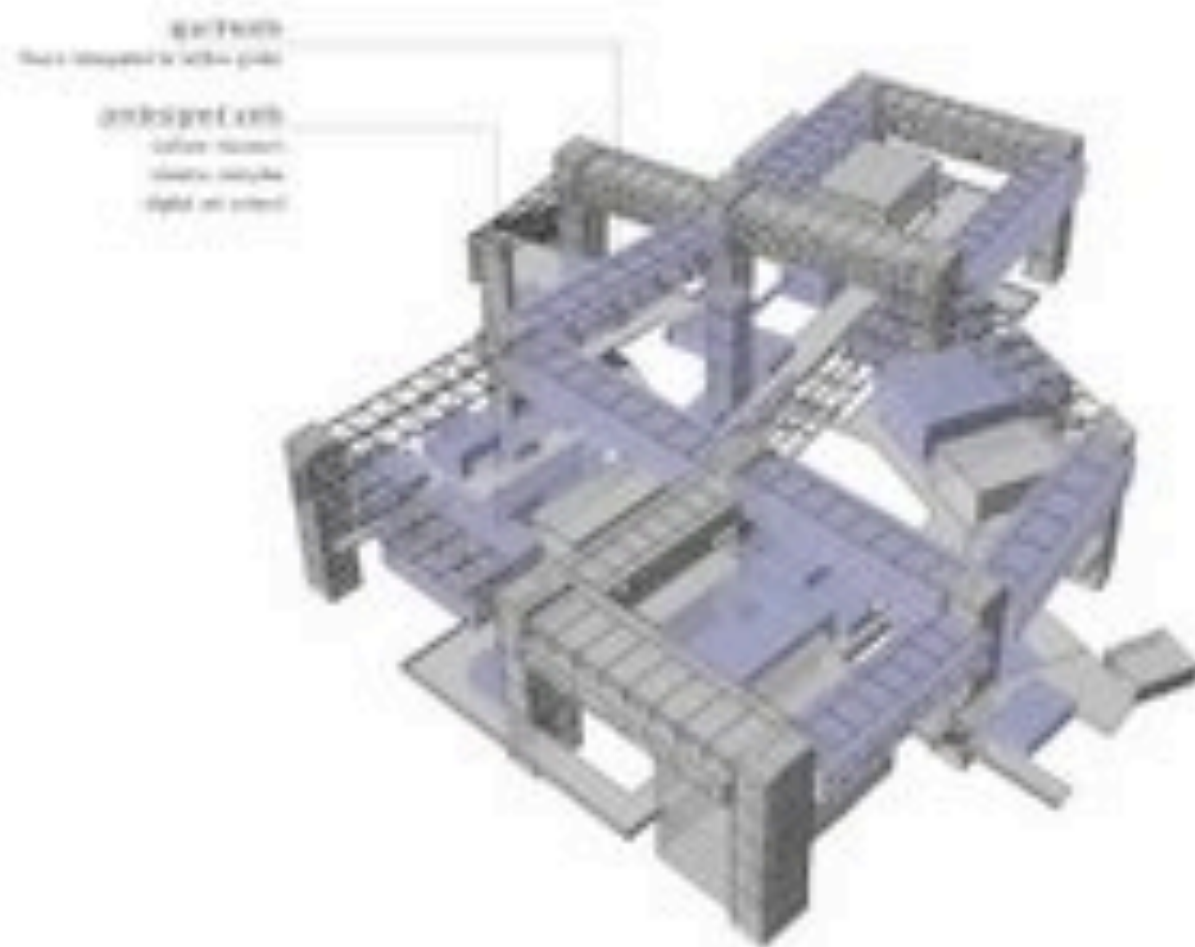
[http://www.bustler.net/index.php/article/chung-nam\\_government\\_complex/](http://www.bustler.net/index.php/article/chung-nam_government_complex/)



# DESIGN PROCESS

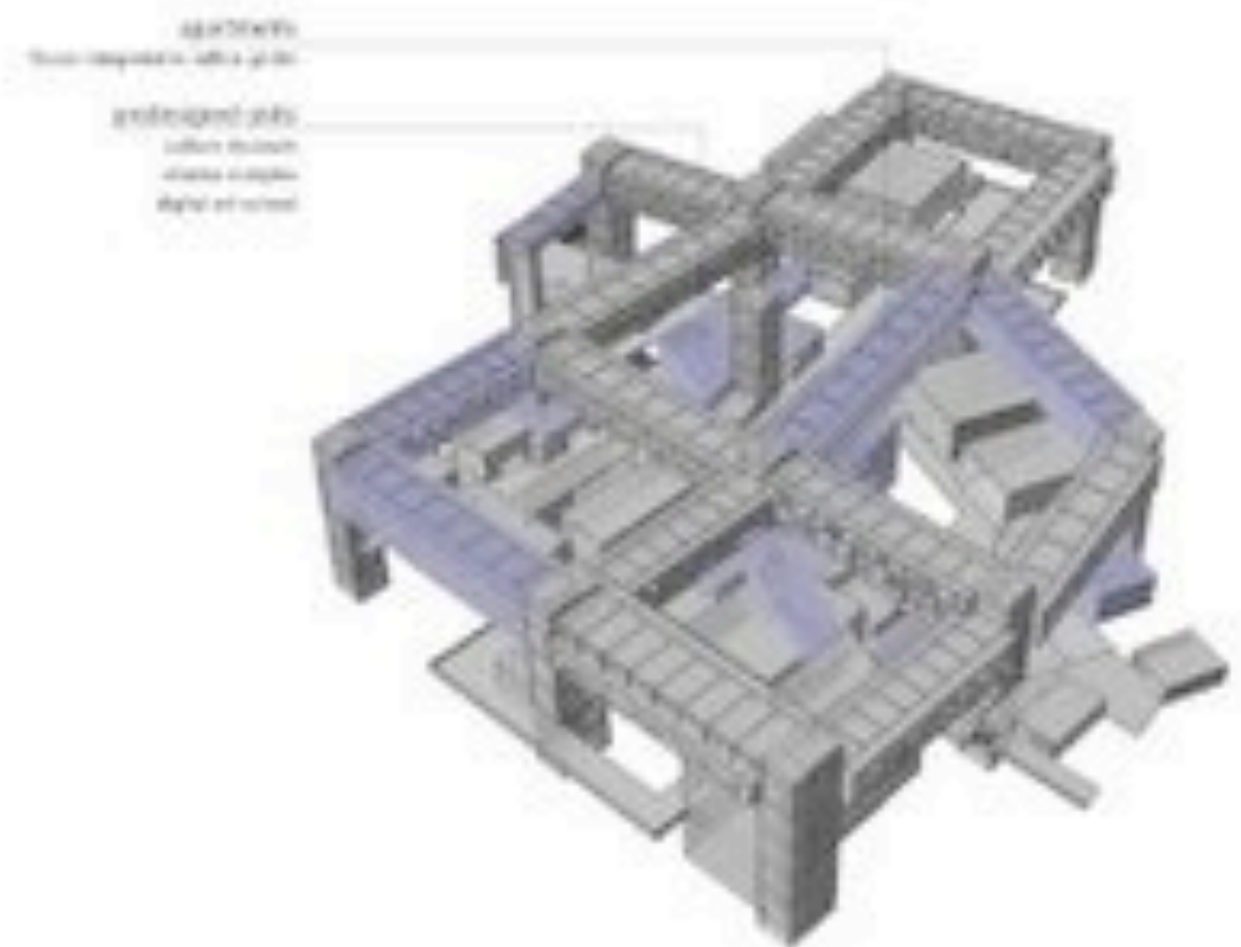


# DESIGN PROCESS



27 months

25% density



33 months

40% density

year 3



# DESIGN PROCESS

city constructed with  
cultural museum  
cultural museum  
cultural museum



42 months

year 4

55% density

city constructed with  
cultural museum  
cultural museum  
cultural museum



57 months

70% density

<http://www.runebadone.com/>

# DESIGN PROCESS



bibimbab unstirred



bibimbab mixed



program units unstirred

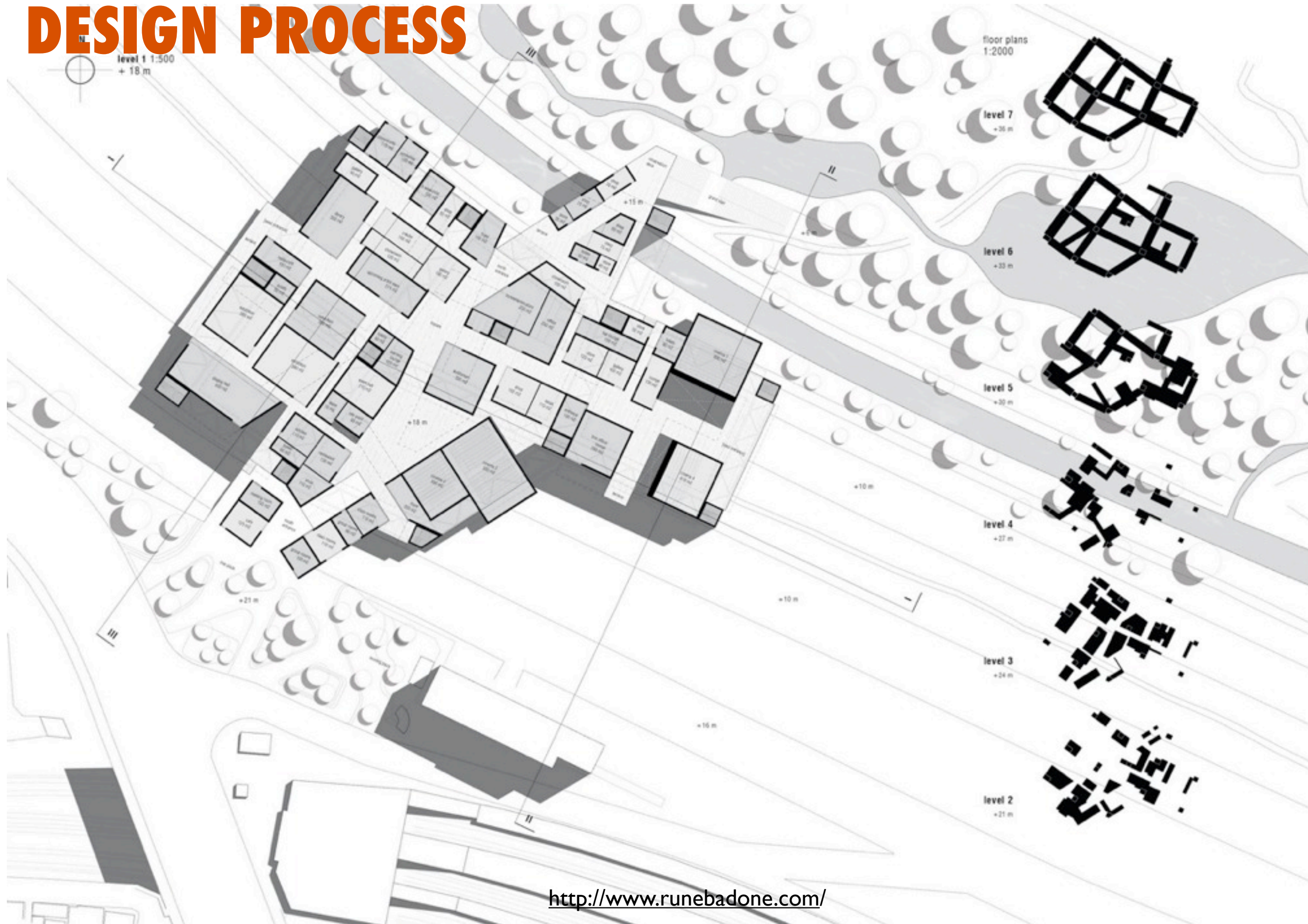


program units mixed

<http://www.runebadone.com/>



# DESIGN PROCESS



<http://www.runebadone.com/>



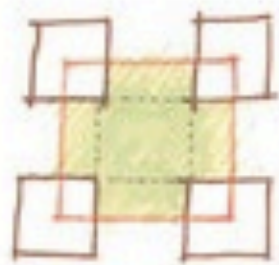
# DESIGN PROCESS



<http://www.runebadone.com/>



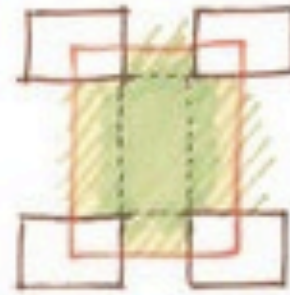
Kurt Altschul: My initial thoughts about a "proto-urban" set of towers led me to study the typology of a four-tower arrangement lacking a site, with an emphasis on the spaces between the towers. I decided to further study in model form a non-orthogonal linear arrangement of towers and the geographical features that would lend themselves to a such an arrangement of towers.



T-shaped open space



Buildings facing an open space



T-shaped open space divided in two directions



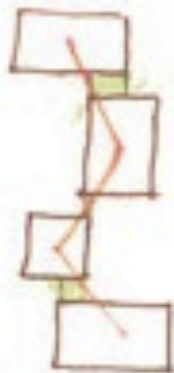
Asymmetric - facing of buildings in open space



Three buildings facing an open space and one building facing a side street



Linear Arrangement



Orthogonal linear arrangement



Asymmetric arrangement facing a street (orthogonal)



T-shaped linear arrangement



Flat



Hilly



Crater



Deep to an Edge



Deep to a point



Ridge



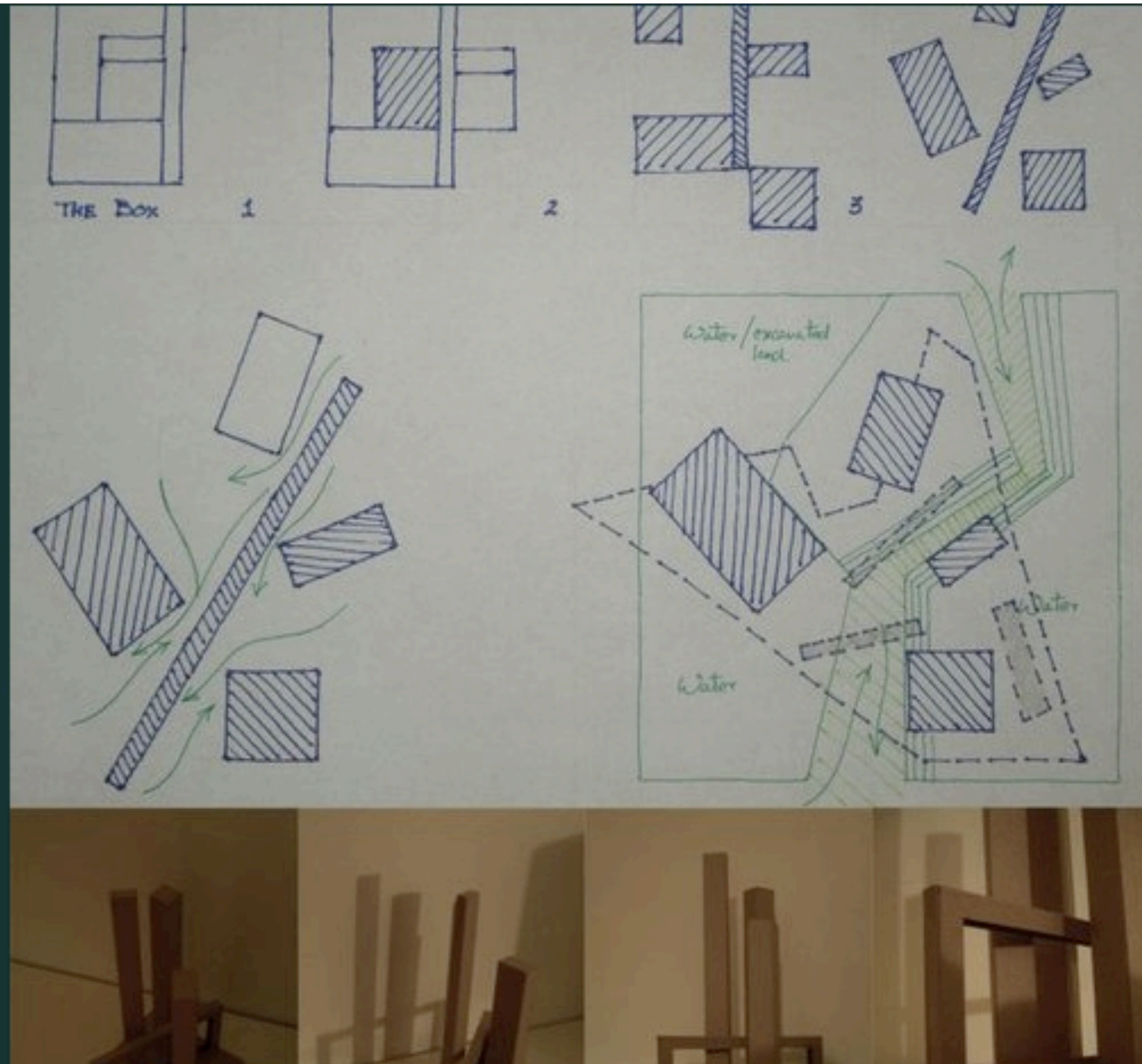
Valley



Plateau



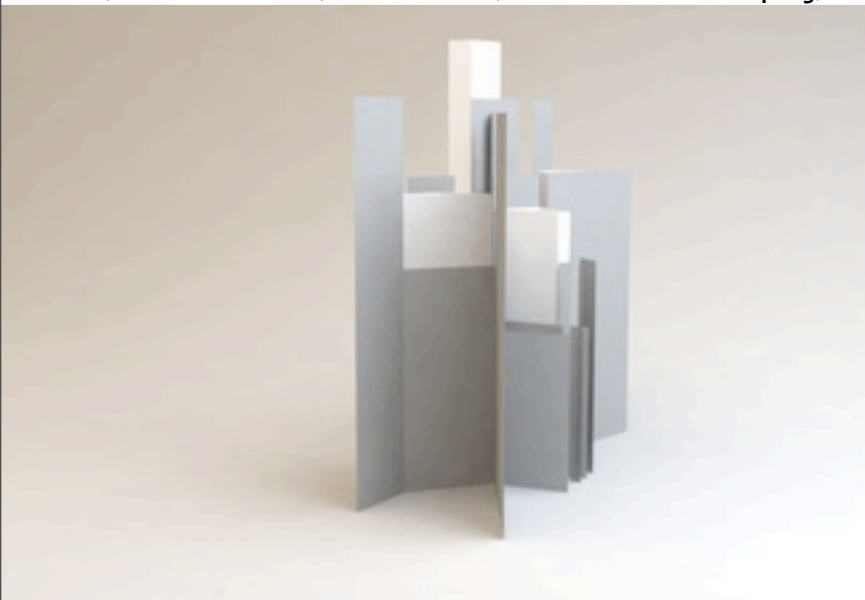
Tapasi Mittal: In the absence of any design parameters such as site, program etc. I choose to look at redefining the 'Tower' typology. This redefined tower behaves like a spine that integrates the four tower complex visually as well as experientially and tries to bridge the verticality of the existing towers with the ground plane.



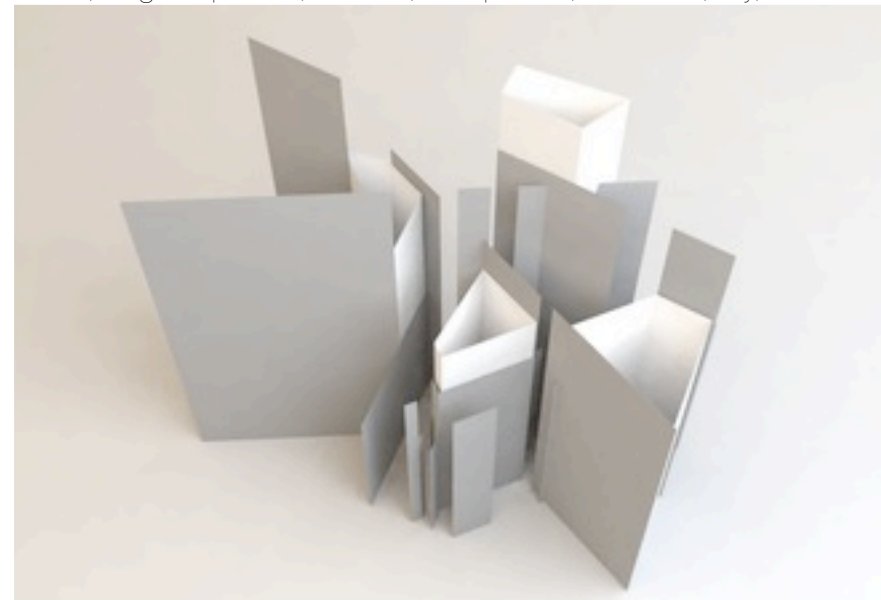


# CENTRE FOR SOCIUS DESIGN

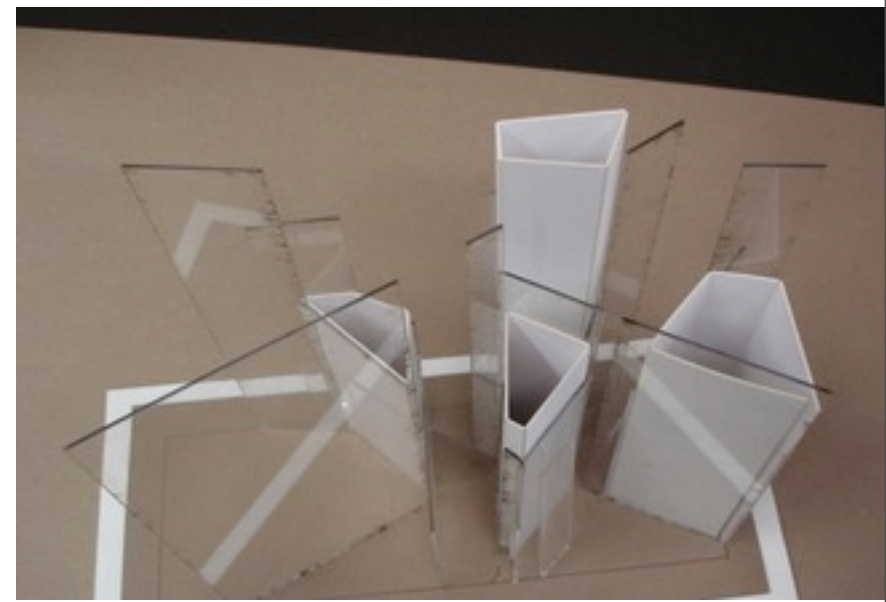
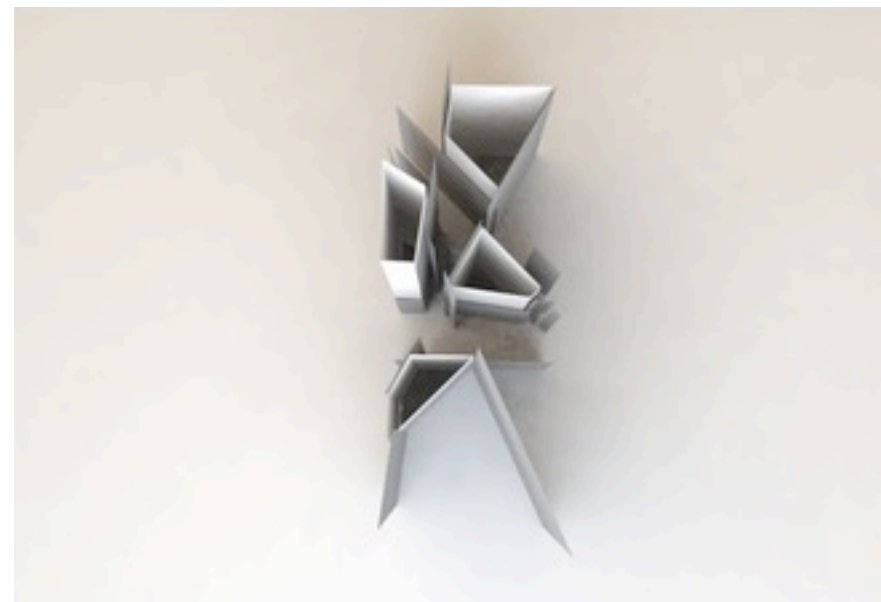
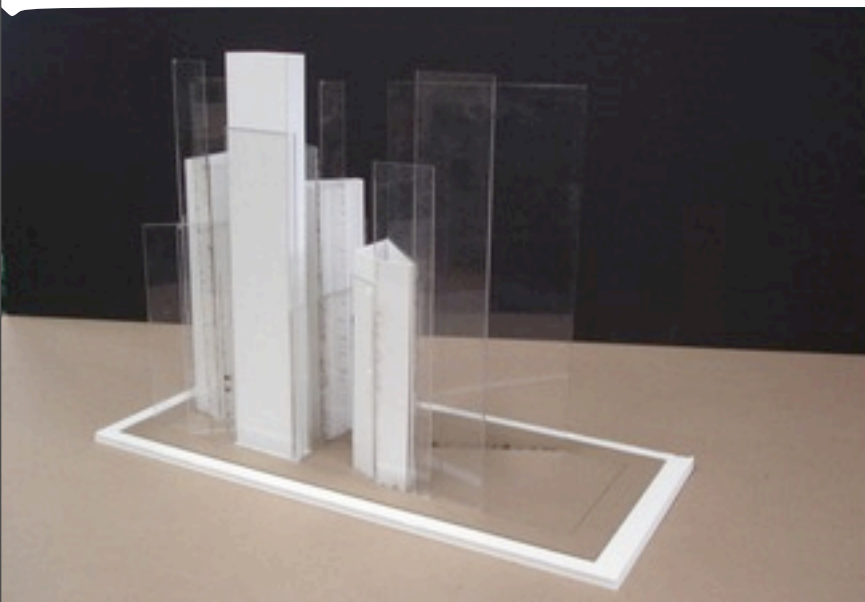
## Spatial Advocacy

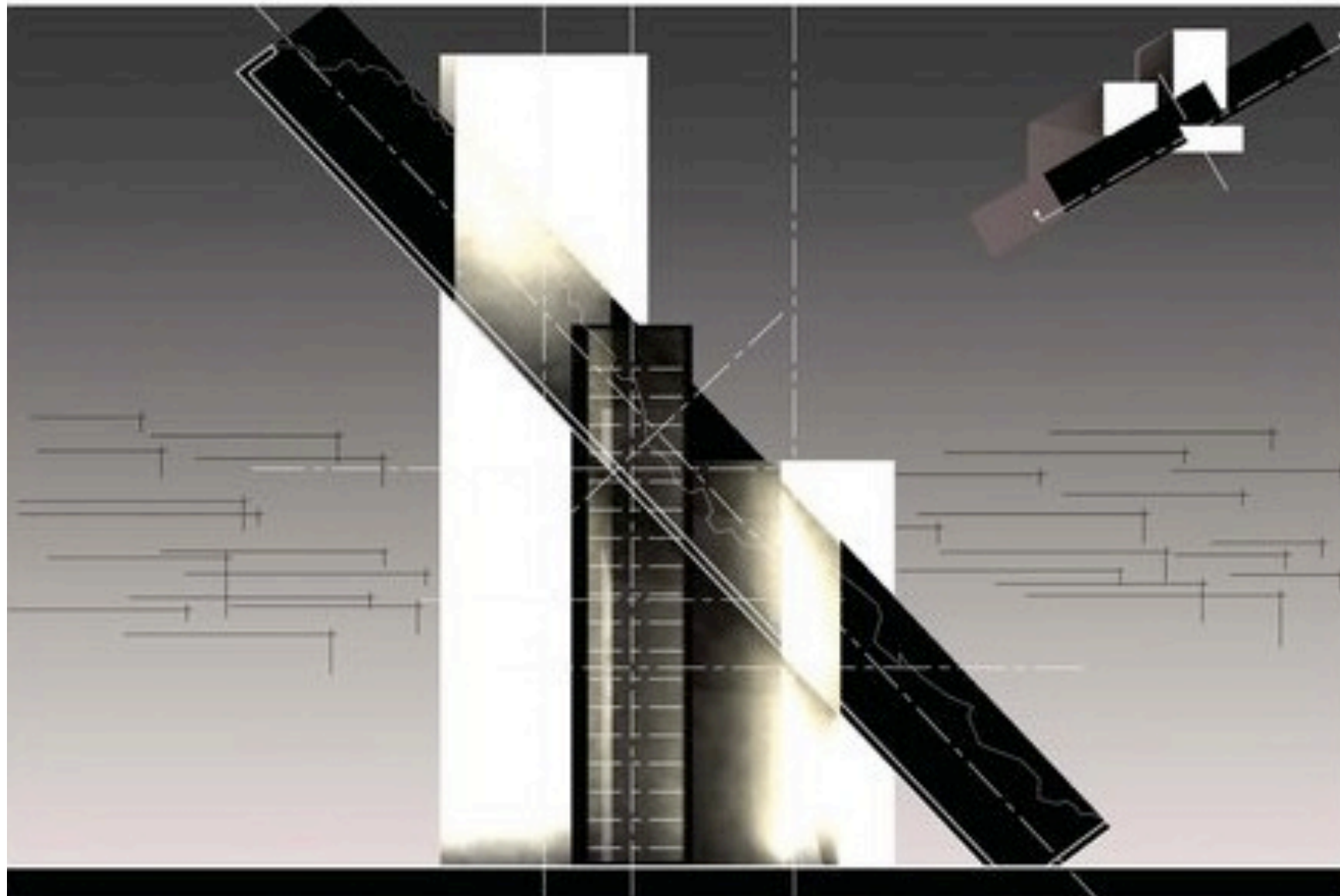
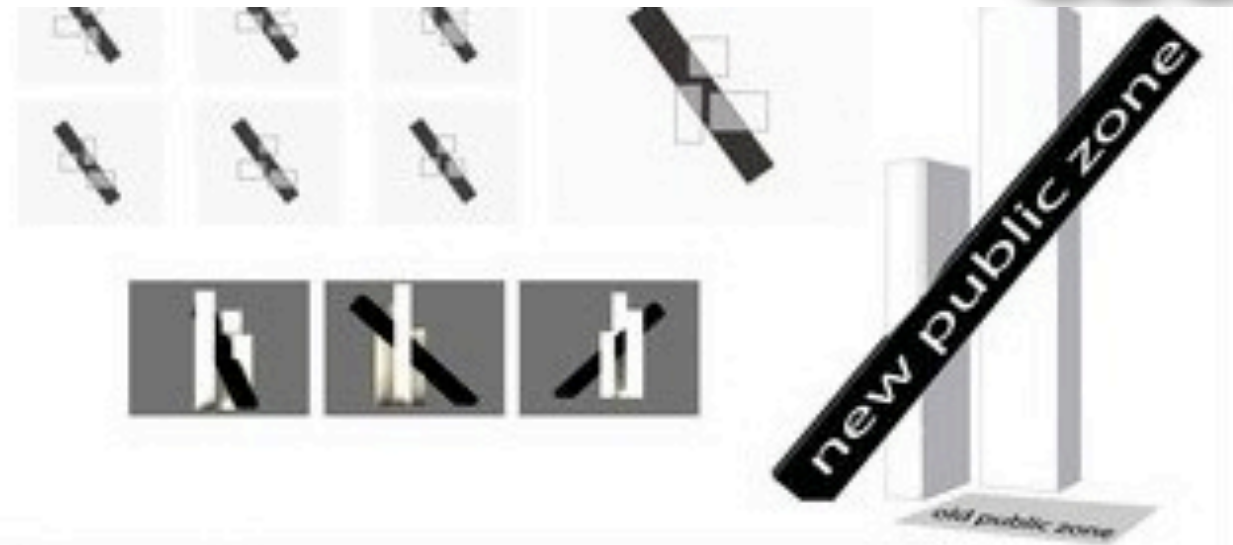


## Spatial Conflict Mapping

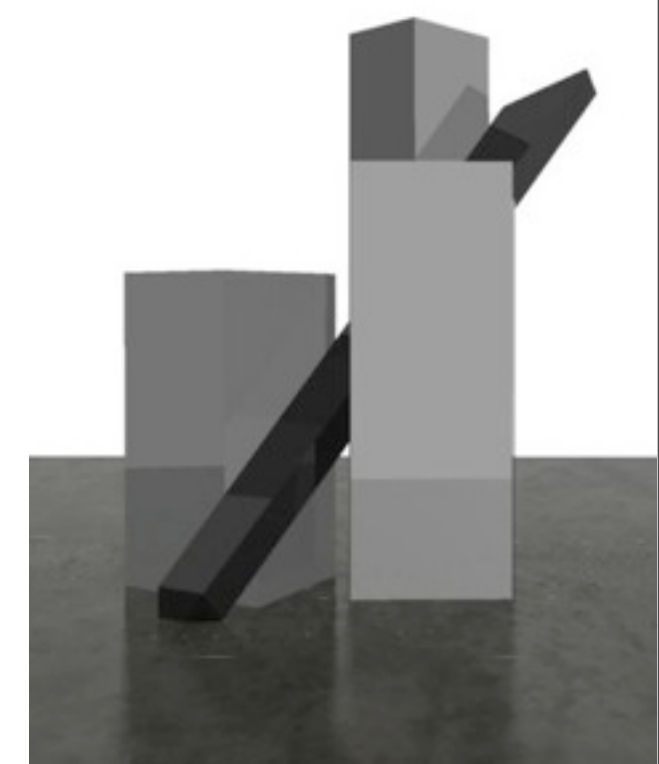
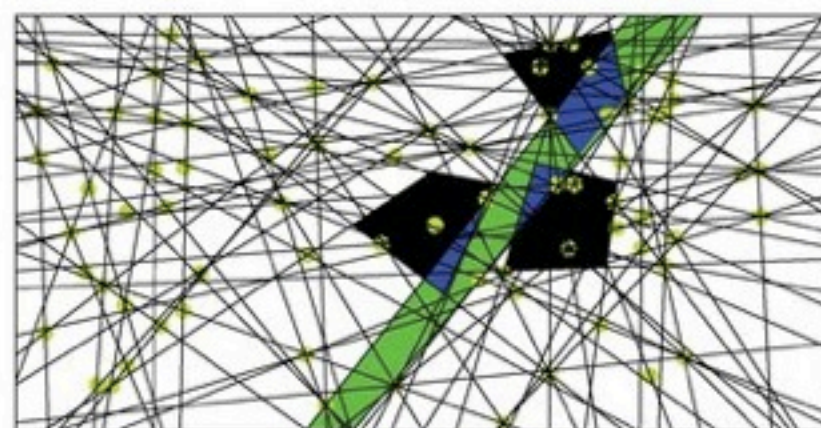
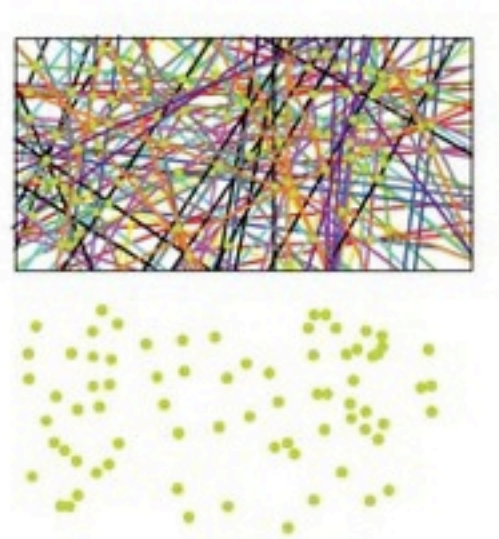
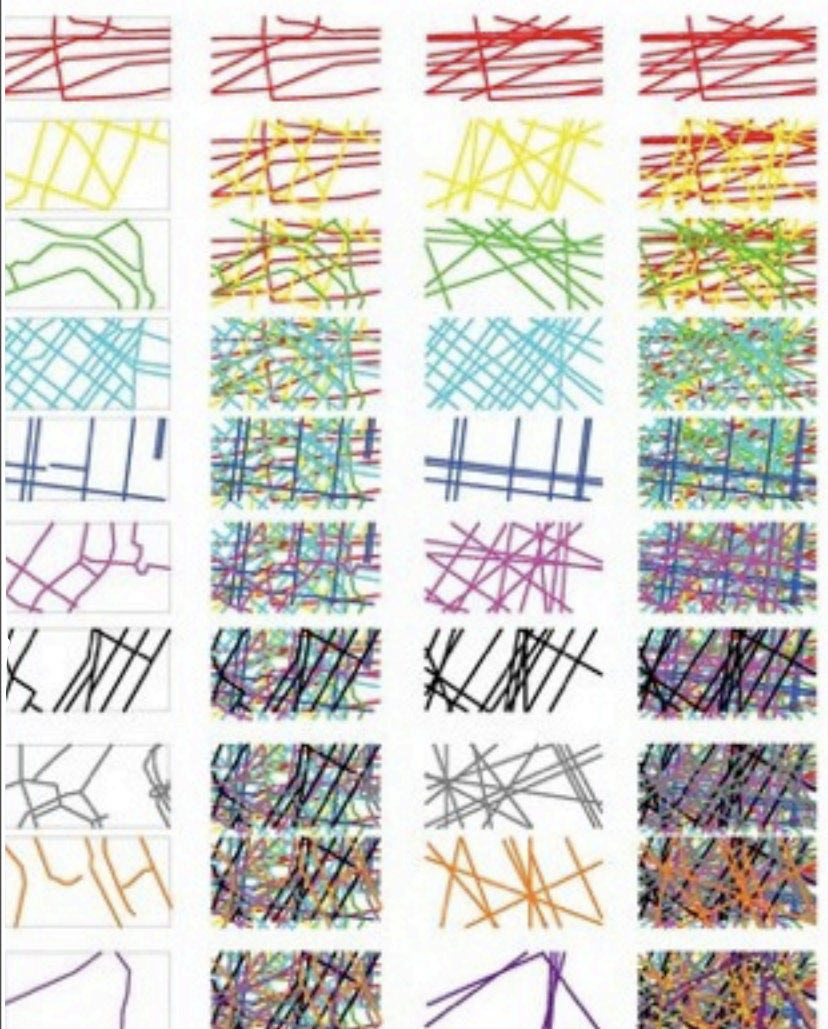
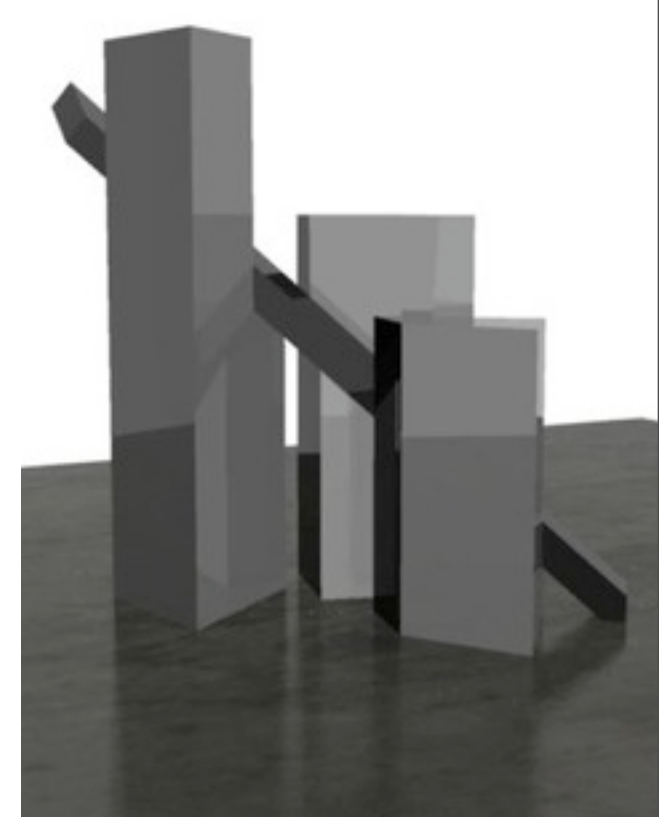
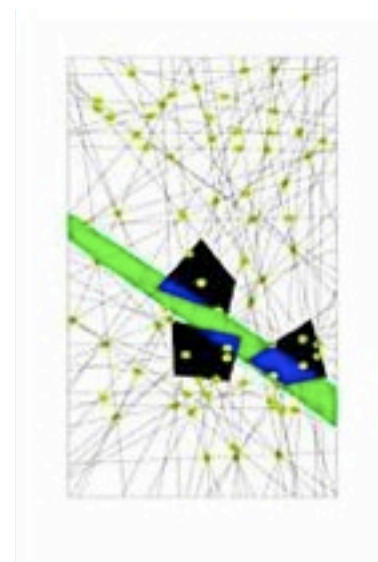
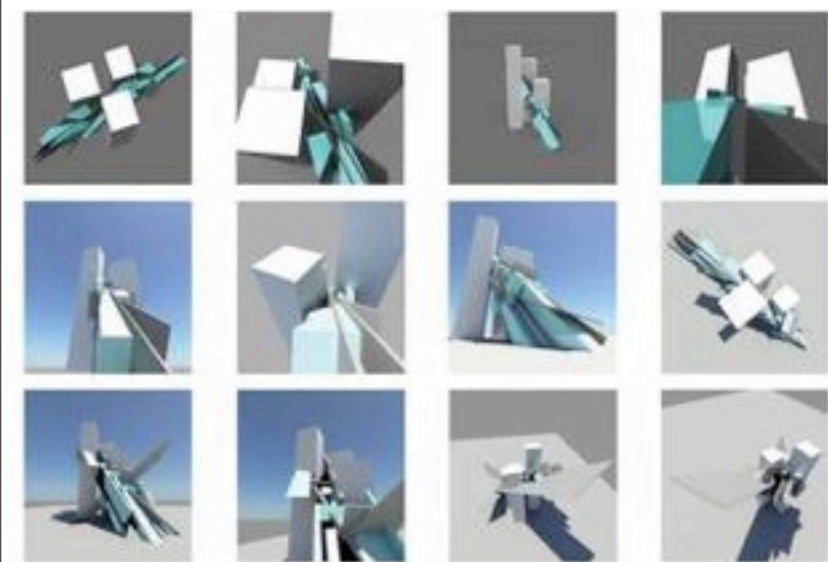


## Experimental Design for Partnership





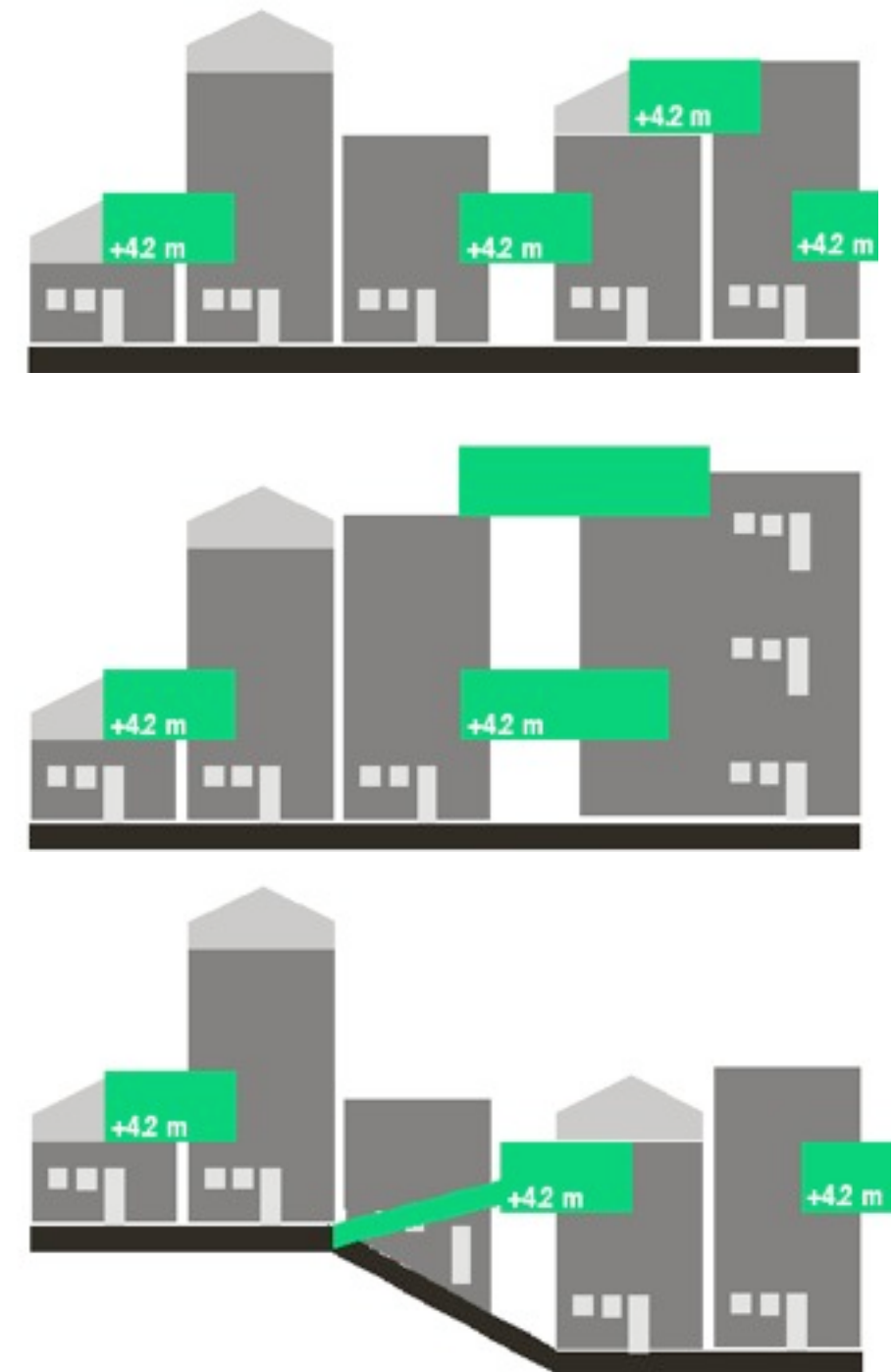
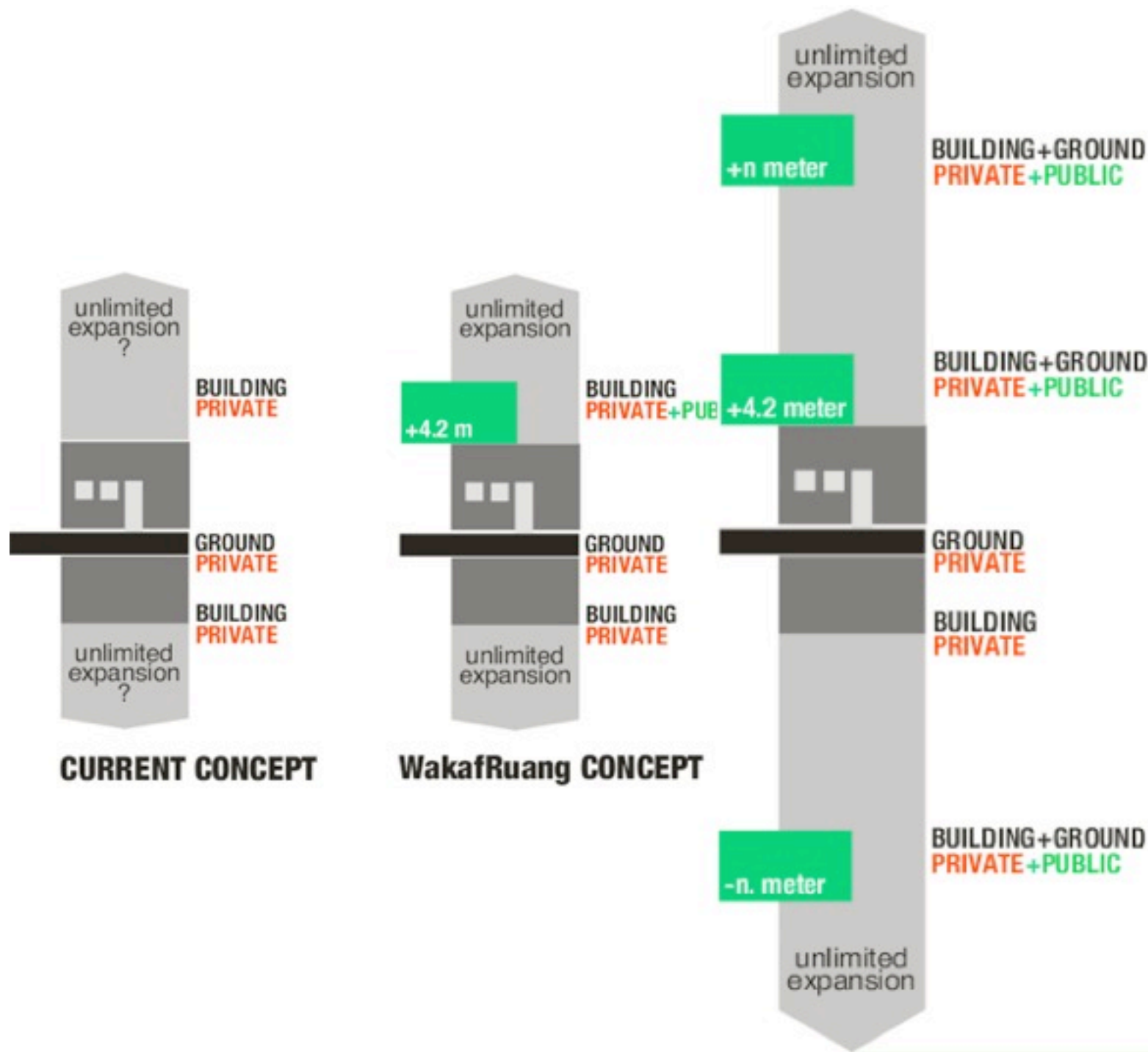




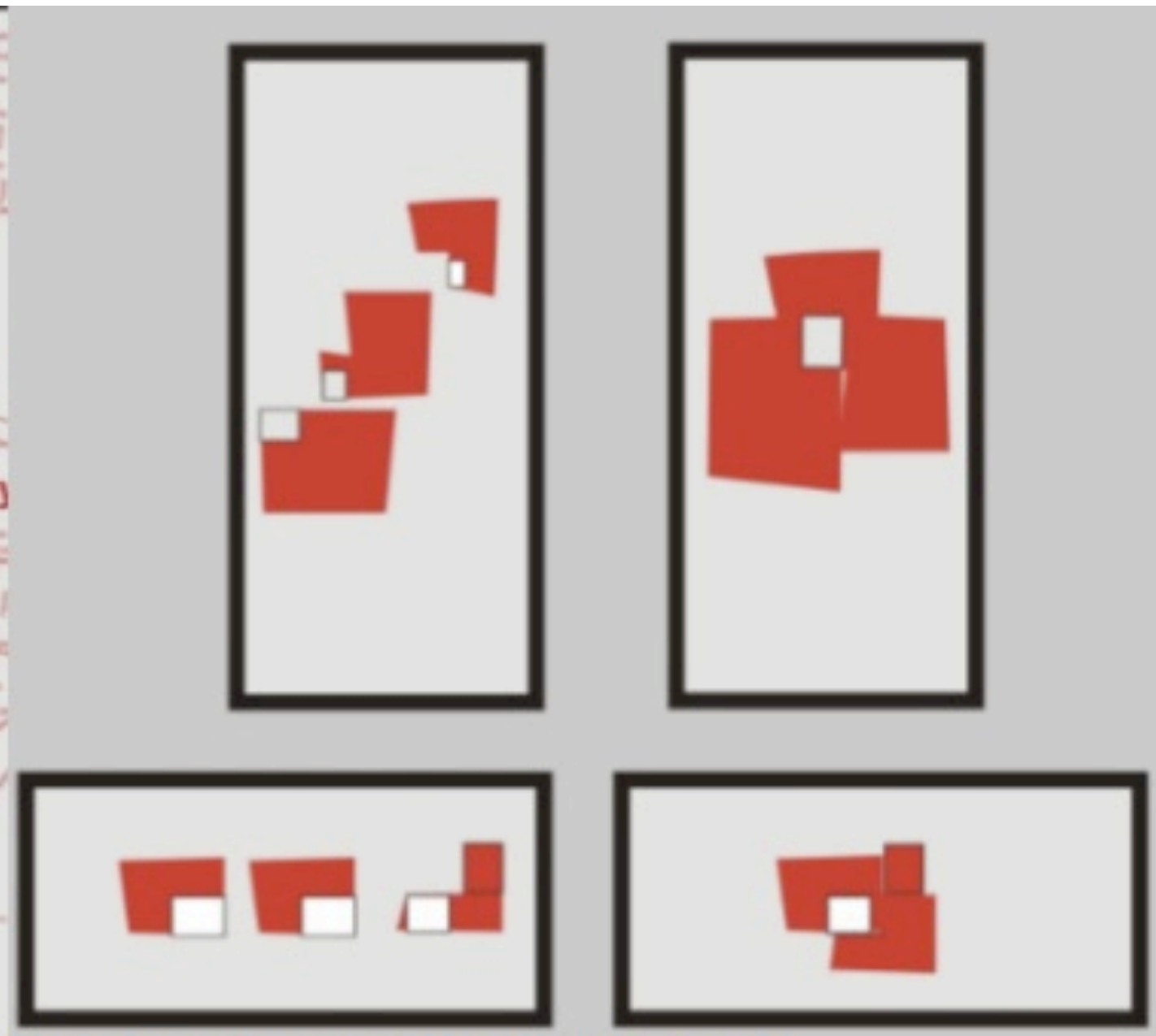






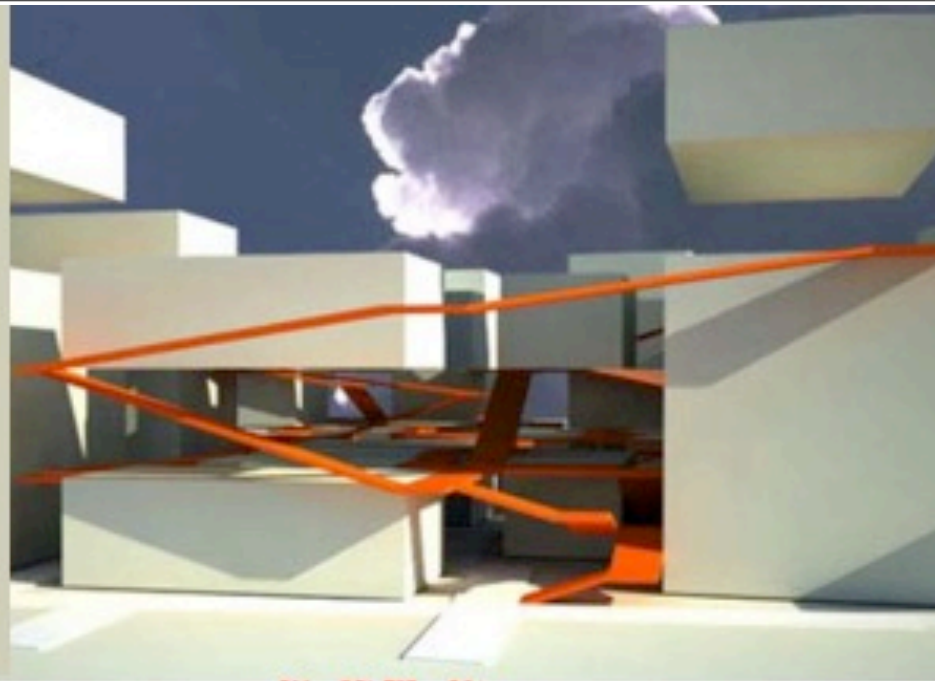


Athough in the form of design principle sometime is very "simple"



*Handaru's exploration of shared space and its relation*





**Salendra, Nova** (2010) "Redundat Playground: Ruang Bermain Sebagai Wadah Keragaman Aktivitas Sosial Masyarakat Badran" unpublished final project of the Department of Architecture year 2010-2011, Yogyakarta: Universitas Islam Indonesia.



**Or too "futuristic" as it is projected for society to come.**

**who will build that?**









**Al Maki, Ahmad** (2010) "Konsep Ruang Rekonsiliasi: Interpretasi Heterotopia Masyarakat Yang Teralienkan Oleh Industrialisasi; Studi Kasus Kota Cilegon" unpublished final project of the Department of Architecture year 2010-2011, Yogyakarta: Universitas Islam Indonesia

**Depicting spatial conflict: risky work?**